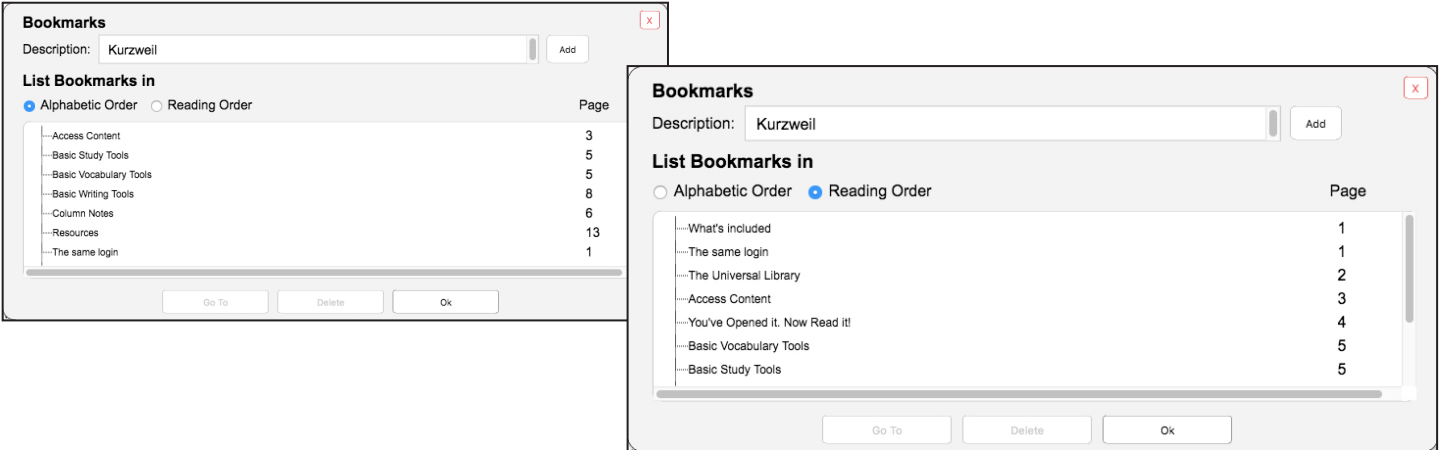




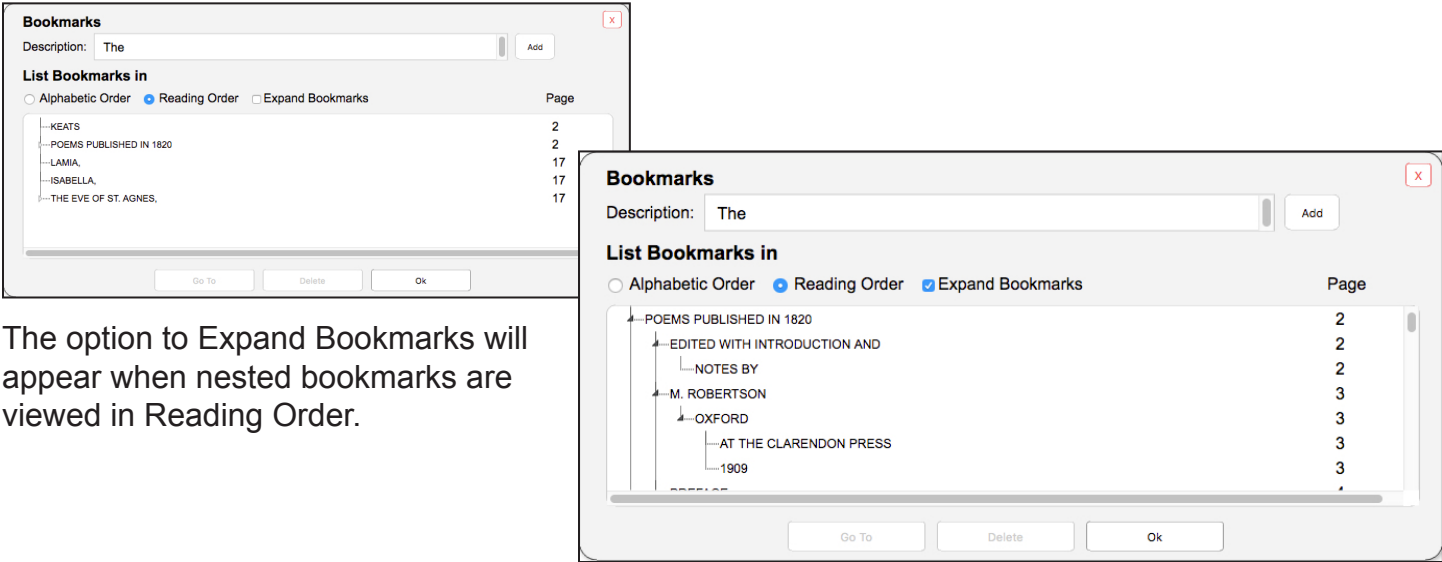
1. Bookmarks Show Page Numbers and Nested Bookmarks in Kurzweil 3000 for Web Browsers (www.Kurzweil3000.com)

When viewing bookmarks, the page number of the bookmark location is listed. If there are nested bookmarks, you can expand them when viewing bookmarks in Reading Order.

File with plain bookmarks



File with nested bookmarks



The option to Expand Bookmarks will appear when nested bookmarks are viewed in Reading Order.

2.

Brainstorm, Outline and Split Screen Views can be downloaded in multiple formats in Kurzweil 3000 for Web Browsers (www.Kurzweil3000.com)

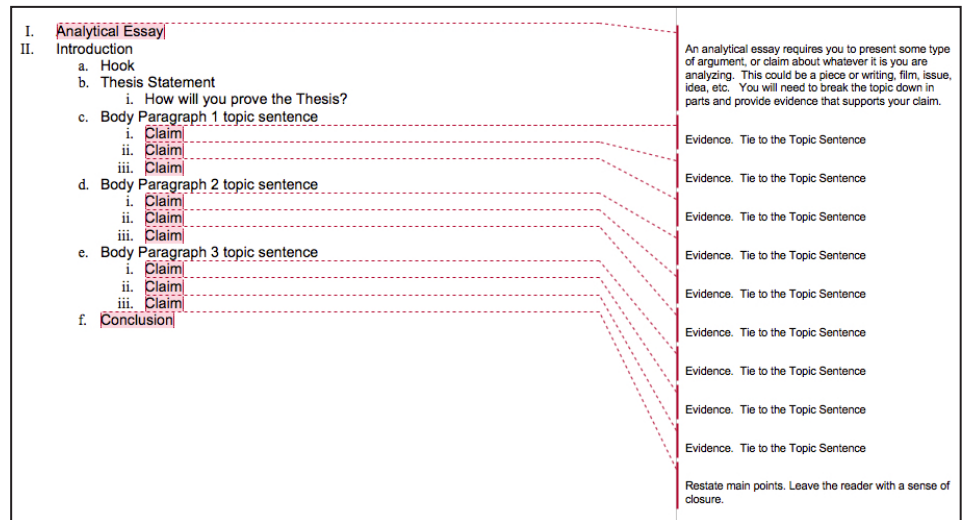
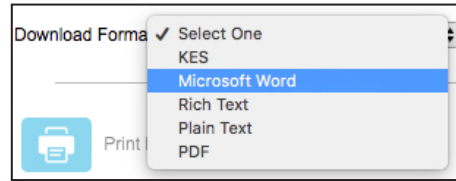
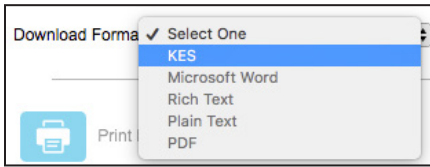
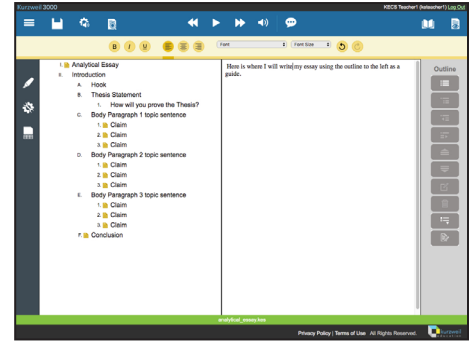
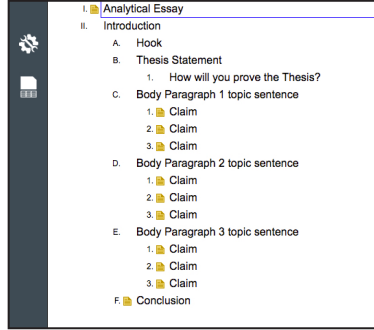
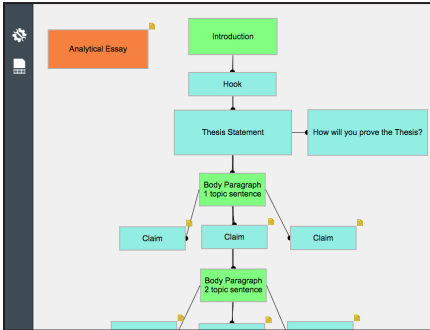
Download each view of the writing path.

Brainstorm view can be downloaded as a .kes file. Outline and Split Screen views can be downloaded in additional formats.

Document Options menu > Download Format

Brainstorm and Outline notes appear as annotations in Microsoft Word or PDF documents.

Split Screen will download the draft pages first followed by the outline pages.




3. Export Annotations by Page or Annotation Type in Kurzweil 3000 for Web Browsers (www.Kurzweil3000.com)

Choose to extract annotations in order by page (default), or grouped by annotation type.

Highlighter menu > Extract button

Click **Advanced** to go to the advanced settings

Check or un-check the box for **Arrange Annotations by Page**



Clara Barton, founder of the American Red Cross. Photo: Library of Congress/Corbis/VCG via Getty Images.

Synopsis: Clara Barton was born in 1821 in Massachusetts. She became a teacher, worked in the U.S. Patent Office and was an independent nurse during the Civil War. While visiting Europe, she worked with a relief group known as the International Red Cross. The group helps people during emergencies and disasters, such as earthquakes or hurricanes. This gave her an idea. Barton lobbied for an American branch when she returned to the United States. The American Red Cross began in 1881 with Barton serving as its first president.

Early Life

Educator, nurse and founder of the American Red Cross. Barton was born Clarissa Harlowe Barton on December 25, 1821, in Oxford, Massachusetts. Barton spent much of her life in service to others and created a group that still helps people in need today. It is called the American Red Cross.

Clara Barton was the youngest of five children and very shy. She found her calling at a young age when she helped to care for her brother David after an accident. She continued being helpful to others as a teenager. She became a teacher at age 15 and later opened a

Arrange Annotations by Page

Arrange Annotations by Page ON

This is the default setting.

Annotations will be extracted into a file organized by page.

Each page section will have all of the annotations from that page.

Arrange Annotations by Page

Arrange Annotations by Page OFF

Annotations will be extracted into a file organized by the type of annotation.

Each section will have all of the annotations of that type (bookmarks, different notes, different color highlights).

Extracted From: biowomenleadersclarabarton23799article_only.pdf.kes

***** Extracted from User: KECS Teacher1 (keteacher1) *****

Page 1

Bookmarks:
Women Leaders: Clara Barton
Synopsis:
Early Life

I. Massachusetts

1. Patent

American Red Cross began in 1881

2. founder

Red Cross, Barton was born Clarissa Harlowe Barton on December 25, 1821, in Oxford, Massachusetts

Page 2

Bookmarks:
"Angel Of The Battlefield"
The American Red Cross
Later Years And Death

II. New Jersey

III. Washington, D.C.

mid-1850s to work in the U.S. Patent Office as its first female clerk

1. inventions

U.S. Civil War (1861-1865)

2. content

IV. Virginia

Extracted From: biowomenleadersclarabarton23799article_only.pdf.kes

***** Extracted from User: KECS Teacher1 (keteacher1) *****

Bookmarks:
Women Leaders: Clara Barton
Synopsis:
Early Life
"Angel Of The Battlefield"
The American Red Cross
Later Years And Death

1. Patent

2. founder

1. inventions

2. content

1. tireless

1. international

2. management

3. salary

American Red Cross began in 1881

Red Cross, Barton was born Clarissa Harlowe Barton on December 25, 1821, in Oxford, Massachusetts

mid-1850s to work in the U.S. Patent Office as its first female clerk

U.S. Civil War (1861-1865)

1865, Barton worked for the War Department

American Red Cross Society was founded in 1881

1889 Johnstown Flood in Pennsylvania

1900 Great Galveston Hurricane in Texas

book titled "The Story of My Childhood," which was published in 1907

died at her home in Glen Echo, Maryland, on April 12, 1912. She was 90 years old

I. Massachusetts

II. New Jersey

III. Washington, D.C.

IV. Virginia

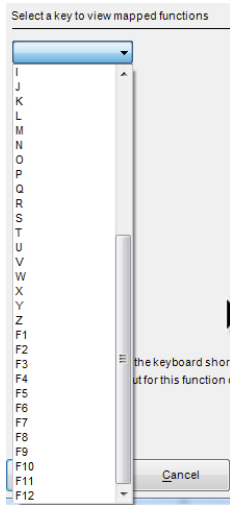
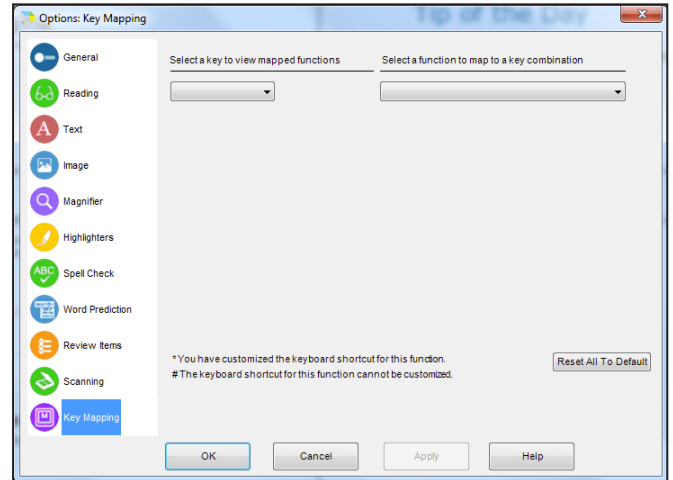
V. Maryland

VI. Europe

4. Customize Key Strokes for Selected Functions in Kurzweil 3000 for Windows (Web License Subscription Only)

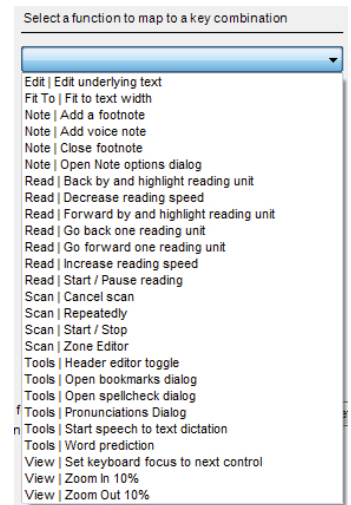
Keyboard shortcuts for many functions in Kurzweil 3000 for Windows can be customized.

Go to **Tools > Options > Key Mapping**



In the drop-down on the left, choose a key to see what functions are assigned to that key, including combinations with Ctrl, Alt and Shift.

In the drop-down on the right, choose a function to see what keys are assigned to it.



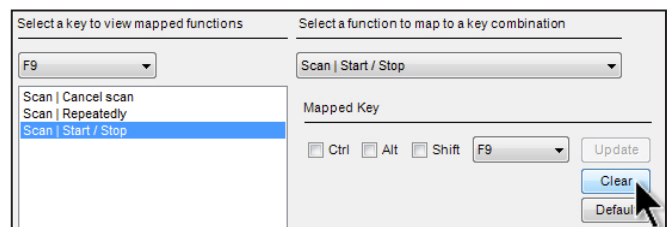
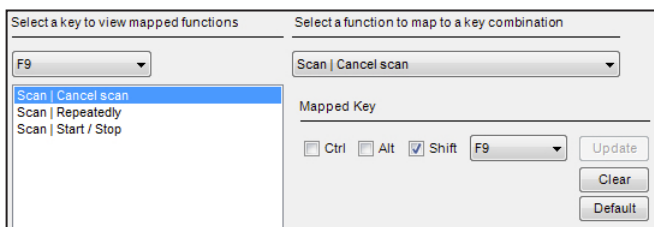
Here are two possible examples for customizing Key Mapping.

Scenario 1:

A student has an assistive device that requires the F9 key, so it cannot be assigned to any functions in Kurzweil 3000 for Windows.

First, find out what function is assigned to F9.

- **Tools > Options > Key Mapping**
- Click the **Key drop-down** and choose F9
- The list shows 3 functions
- Click each to see the exact key combination
- F9 is assigned to Scan|Start/Stop
- Select Scan|Start/Stop in the list and click the **Clear button** and click **Apply**

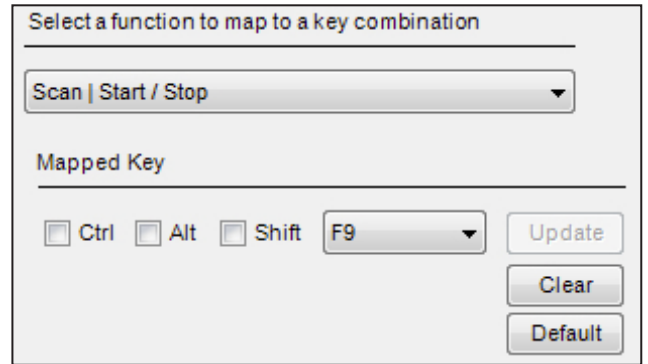


Notice that in the list of functions, Scan|Start/Stop now has an asterisk (*) to indicate it has been customized.

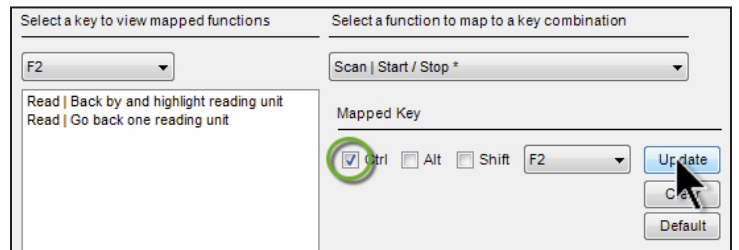
Scenario 2:

A student wants to use the F2 key to start and stop scanning.

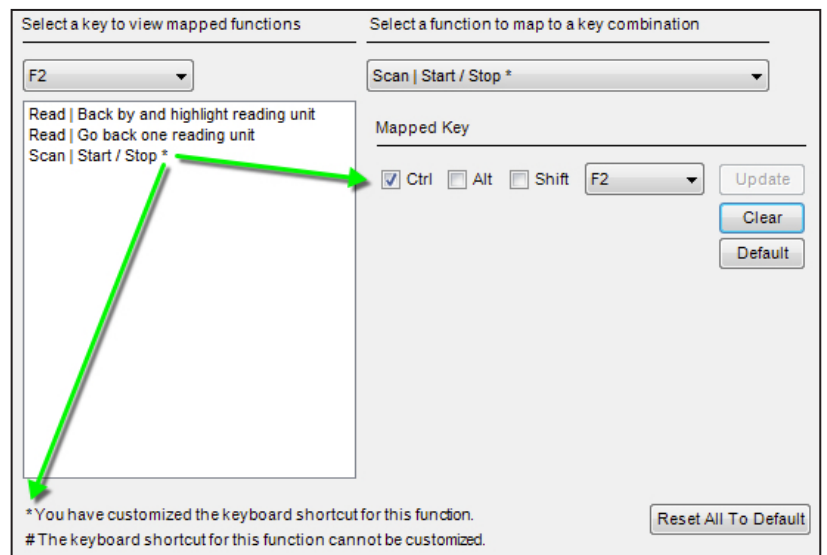
- **Tools > Options > Key Mapping**
- Click the **Function drop-down** and choose Scan|Start/Stop
- Choose F2 from the Mapped Key drop-down
- The list to the left shows any functions already mapped to F2 including combinations



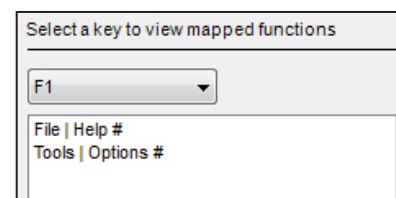
- Change the mapped key to an unused combination (like Ctrl-F2) and click **Update**



Scan|Start/Stop will appear in the key list with an asterisk (*) to indicate it has been customized.

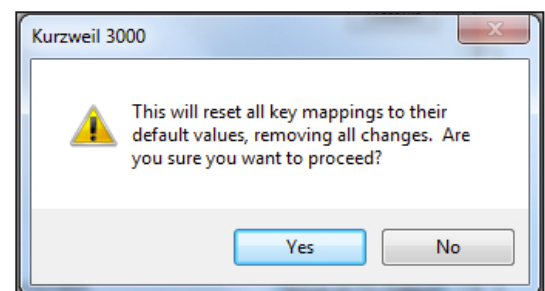
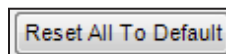


Some functions, like F1 for Help, cannot be changed. They will appear in the list with a pound sign (#) to indicate they cannot be changed.



Use the **Default** button to restore a particular function back to the default setting.

Use the **Reset All to Default** button to restore all functions back to the default settings.



Fourteen Books Added to the Classic Literature Library

Author	Title
Augustine, Saint	The Confessions of Saint Augustine
Barrie, Sir James Matthew	Peter Pan
Christie, Agatha	The Murder on the Links
Doyle, Arthur Conan, Sir	The Hound of the Baskervilles
Doyle, Arthur Conan, Sir	The Sign of the Four
Equiano, Olaudah	The Interesting Narrative of the Life of Olaudah Equiano
Ibsen, Henrik	Hedda Gabler
Locke, John	Second Treatise of Government
Lockwood, Ingersoll	Baron Trump's Marvellous Underground Journey
Mill, John Stuart	On Liberty
Montaigne, Michel de	Essays of Michel de Montaigne
Nietzsche, Friedrich	Beyond Good and Evil
Riis, Jacob	How the Other Half Lives
Wharton, Edith	Ethan Frome