

Kurzweil 3000 Taskbar

The Kurzweil Taskbar, which appears as a small bar in the Windows Taskbar, provides quick access to a subset of Kurzweil 3000 features: **Read**, **Dictionary Look Up**, and **Check Spelling**.

This is very convenient when you are working in applications other than Kurzweil and want to quickly read a short selection of text, or check your spelling or look up the definition of a word.

You can drag/drop selectable text from any application and “drop” it onto the Kurzweil 3000 taskbar. While composing an email or filling out an online form you can easily copy/paste or drag/drop text and check it.

Using the Taskbar:

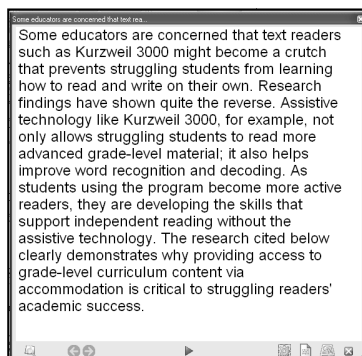
1. From within any application (email, webpage, blog, etc. anything with selectable text) highlight the text you would like to read and drop it onto the Kurzweil 3000 box in your taskbar.



NOTE: If you do not see the Kurzweil 3000 tools in your taskbar:

1. Right Click on your taskbar.
2. Select “Toolbars”,
3. Select “Kurzweil Taskbar”
4. Let go of your mouse.
5. You should see the Kurzweil icons in your taskbar .

2. A separate dialog box will open and your text will be read to you.



3. To check spelling, select a word and click on the ABC button. If you spelled it correctly, you'll hear a message telling you, you spelled it correctly. Or, click on the Definition button to get the definition.

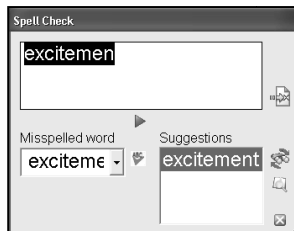


Check Spelling



Definition

4. If you misspell the word, the Spell Check window will appear. Click on the word in the Suggestions window to either replace or Look Up the definition. Click on the words in the Suggestions window to hear the word.

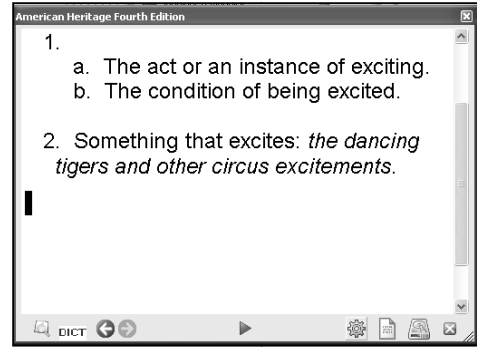


Find next

Replace

Lookup

5. When you click on the Look Up button you'll see the definition of the word. The definition will be automatically read to you. To hear the definition again, place your cursor at the beginning of the text and click the green arrow – click the pause button to stop the reading.

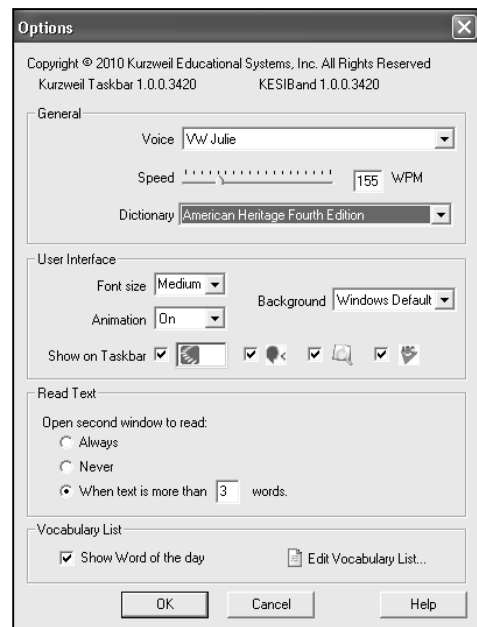


6. To change the settings for the Taskbar, click on the gear,



, on the bottom of the screen.

7. Change the settings (Font, Speed, Voice, etc.) and click OK.



8. For more information use Kurzweil 3000's Help and type "Taskbar" in the Search box.